

B6F

- Stainless steel IP67 single point load cell
- Bending beam
- Suitable for belt, platform and other electronic weighing devices
for 50kg-200kg: 400 x 400 mm
for 250kg-500kg: 600 x 800 mm
for 750kg-2t: 1200 x 1200 mm



Features

- Capacities: 100kg~2000kg
- High accuracy
- Low profile and easy installation
- OIML Cert. No.: R60/2000-NL1-10.31

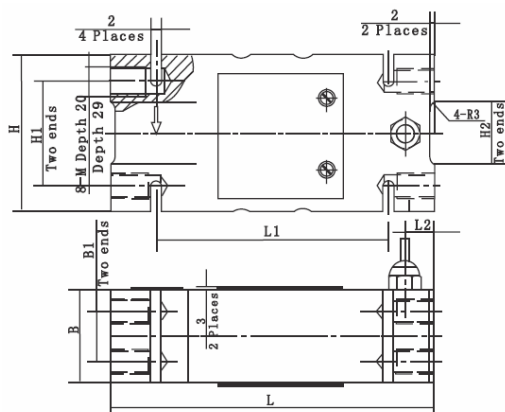


OIML test certificate no. TC7867 Revision 0 C of C no R60/2000-NL1-10.31

Specifications

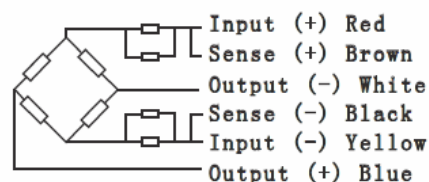
Capacity	kg	2.5/3/5/6/8/10/15/20/30/35/40/50
Accuracy		C3
Maximum Number of Verification Intervals	Nmax	3000
Minimum Number of Verification Intervals	Vmin	E _{max} /10000
Output Sensitivity	(mV/V)	2.0±0.2/2.0±0.002
Input Resistance	(Ω)	384±4/400±20
Output Resistance	(Ω)	351±2.0
Insulation Resistance	(MΩ)	≥5000 (50VDC)
Zero Balance	(%FS)	1.5
Temperature, Compensated	(°C)	-10~+40
Temperature, Operating	(°C)	-35~+70
Excitation, Recommended	(V)	5~12 (DC)
Excitation, Max	(V)	18 (DC)
Safe Overload	(%FS)	150
Ultimate Overload	(%FS)	300

Dimensions in mm (in)



Dimension	50kg 200kg	250kg 500kg	750kg 2t
Capacity			
B	44 (1.73)	60 (2.36)	76 (2.99)
B1	24 (0.94)	36 (1.42)	46 (1.81)
H	75 (2.95)	95 (3.74)	125 (4.92)
H1	50 (1.97)	70 (2.76)	95 (3.74)
H2	30 (1.18)	30 (1.18)	65 (2.56)
L	156 (6.14)	146 (5.75)	176 (6.93)
L1	112 (4.4)	110 (4.33)	110 (4.33)
L2	14 (0.55)	11 (0.43)	24 (0.94)
M	M12	M12	M16

Wiring



- Shielded, 6 conductor cable
- Cable diameter: 0.24in
- Standard cable length: 10ft
- Shield not connected to element