

L6H5

- Aluminum-alloy IP65 single point load cell
- Colourless anodized
- Suitable for single and double load cells structured platform scales
- Recommended platform size: 200x200mm

Features

- Capacities: 4kg~20kg
- High accuracy
- OIML Cert. No.: R60/2000-NL1-10.23

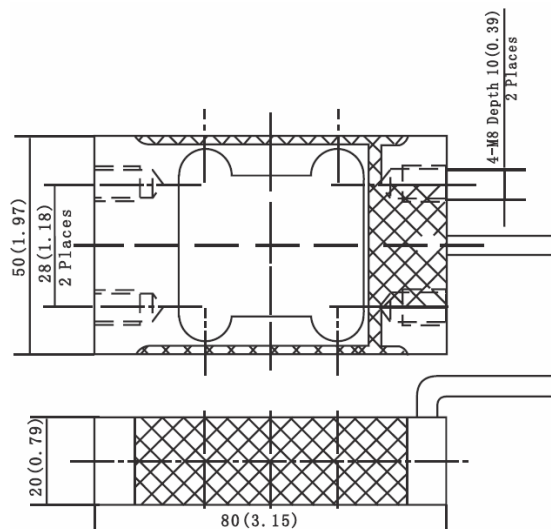


OIML test certificate no. TC7839 Revision 0
C of C no R60/2000-NL1-10.23

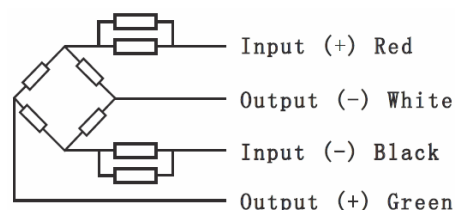
Specifications

Capacity	kg	4/5/6/8/10/20
Accuracy		C3D
Maximum Number of Verification Intervals	Nmax	2500
Minimum Number of Verification Intervals	Vmin	E _{max} /5000
Output Sensitivity	(mV/V)	2.0±0.2
Input Resistance	(Ω)	406±6
Output Resistance	(Ω)	350±3
Insulation Resistance	(MΩ)	≥5000 (50VDC)
Zero Balance	(%FS)	2
Temperature, Compensated	(°C)	-10~+40
Temperature, Operating	(°C)	-35~+65
Excitation, Recommended	(V)	5~12 (DC)
Excitation, Max	(V)	18 (DC)
Safe Overload	(%FS)	120
Ultimate Overload	(%FS)	150

Dimensions in mm (in)



Wiring



- Shielded, 4 conductor cable
- Cable diameter: 0.15in
- Standard cable length: 0.5m
- Shield not connected to element
- Cable jacket in PVC