

# L6E

- Aluminium-alloy IP65 single point load cell
- Colourless anodized
- Suitable for pricing scales, bench scales, etc.
- Maximum platform size: 400x400mm



Certificate no. 11-062

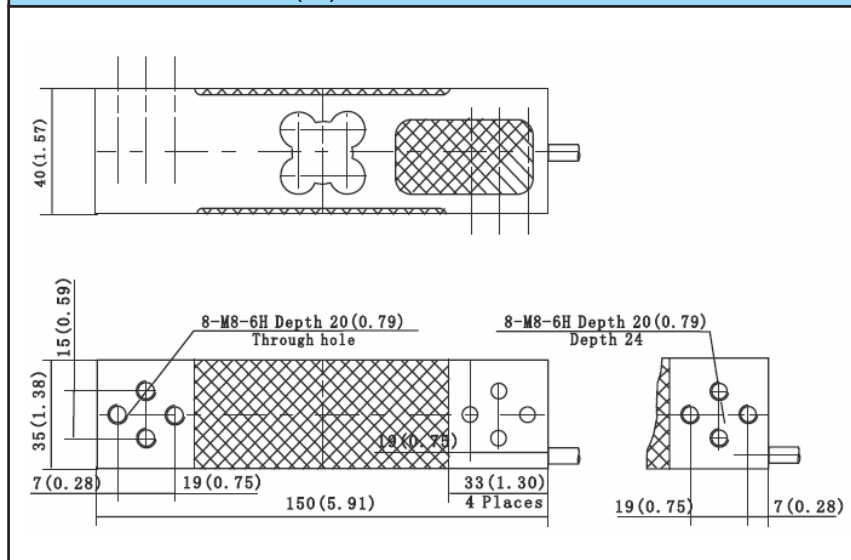


test certificate no. TC7838 Revision 0  
C of C no R60/2000-NL1-10.22

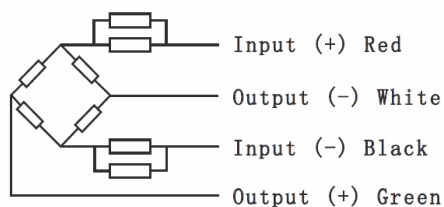
## Specifications

Capacity	kg	50/60/80/100/150/200/300
Accuracy		C3
Maximum Number of Verification Intervals	Nmax	3000
Minimum Number of Verification Intervals	Vmin	E <sub>max</sub> /7000
Output Sensitivity	(mV/V)	2.0±0.2
Input Resistance	(Ω)	406±6
Output Resistance	(Ω)	350±3
Insulation Resistance	(MΩ)	≥5000 (50VDC)
Zero Balance	(%FS)	±2
Temperature, Compensated	(°C)	-10~+40
Temperature, Operating	(°C)	-35~+65
Excitation, Recommended	(V)	5~12 (DC)
Excitation, Max	(V)	18 (DC)
Safe Overload	(%FS)	120
Ultimate Overload	(%FS)	150

## Dimensions in mm (in)



## Wiring



- Shielded, 4 conductor cable
- Cable diameter: 0.15in
- Standard cable length: 2m
- Shield not connected to element
- Cable jacket in PVC